

GNI RealTime Messenger

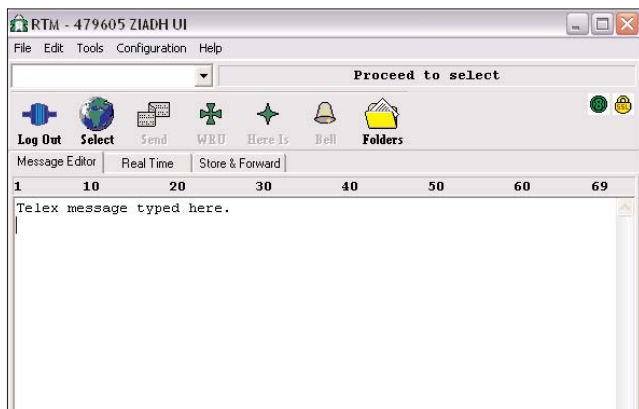
Flexible & user friendly

Software Overview

RealTime Messenger is a Windows based software providing both real time and store & forward telex service.

Real Time delivery allows the sender to be in real time contact with the receiving party, while store & forward delivery allows the sender to schedule a telex message for delivery at a later time. The recipient of a store & forward message, does not have to be connected and can retrieve his telex messages at any time.

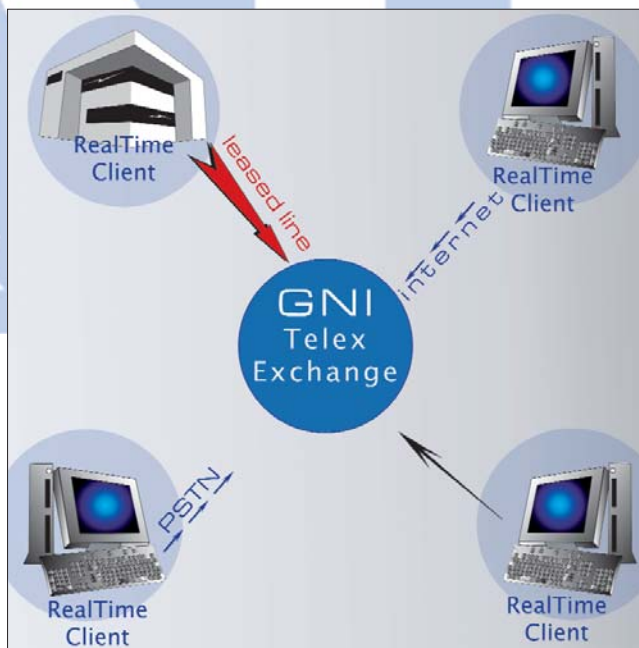
RealTime Messenger connects directly to the GNI telex exchange through a dial-up or internet connection using unique programming of telex characters. It also offers UK based telex numbers, should



the user wish to receive the telex messages in the PC. GNI's RealTime Messenger does not need to stay connected to the telex exchange and all telex messages sent to your number will remain stored until the time you connect the RealTime Messenger and download them. In the mean time, the sender will automatically receive the recipient's answerback as verification proof.

RealTime Application

RealTime Messenger allows you to send messages directly from your PC, with real time connection and real time answerback exchange. The largest percentage of telex costs comes from outbound international call charges and RealTime Messaging offers you substantial saving on the outgoing portion of your messages, without any investment or addition to your structure.



RealTime Messenger enables your telex messages to be delivered, from you PC via different access methods

Store & Forward Application

RealTime Messenger allows you to write a telex message and submit it to be delivered at a day and time of your choice. It will remain in the GNI telex exchange until the time of delivery. The store & forward application offers many features such as offline text preparation, multi address, answerback verification and delivers status reports automatically after the telex message has been delivered.

GNI RealTime Messenger

Flexible & user friendly

Security & Encryption

GNI's RealTime Messenger offers several levels of security & encryption, such as different user passwords, imbedded answer-backs, copy protection, 256 bit data encryp-

tion, telex exchange security and many more which makes it much more secure than traditional telex machines. For more details, check the security & encryption data sheet.

Features & Benefits

- Message editor supporting text import.
- Telex address book.
- End-to-end, real time telex conversation.
- Manual or automatic print out of inbound and outbound telex sessions
- Automatic file archive of all telex sessions
- Reselection of previously dialed telex numbers
- Session scheduler to automatically connect to the GNI telex exchange
- Security of access with user-defined password protection
- Encoding of all data transmitted
- Selection by aliases (descriptive mini-codes)
- User-defined text strings for translation of non-telex characters
- On-line mailbox storage/retrieval of inbound telex messages.

Specifications

Software: Windows9x, NT 2000, XP OS
Minimum Hardware: Pentium 166
with 32 RAM and 540 MB disk space
Internet access (dial up or NIC)

About GNI

The GNI team draws from years of experience in the field of telecommunications & messaging. Our expertise is in understanding the needs of legacy & secure messaging with contemporary solutions. As markets and technology continue to evolve, GNI is able to assist both the SME & large corporate clients overcome these

challenges. Outsourcing has helped many companies avoid wasted investments in technology and solutions that either continue to require investment or are too costly to manage and operate. In addition to our outsourced solutions we offer basic messaging services such as Telex & Fax at competitive rates.

For more information: sales@gnisa.com